

PROPOSED 3D

HOTEL

1337 CT. AVE. NW

12/05/18

1825 K STREET, NW SUITE 300 WASHINGTON D.C. 20006

Board of Zoning Adjustment
District of Columbia
CASE NO. 18900B
EXHIBIT NO. 2

PG 1

BBGM

1078.00

Penelope Hotel

1337 Connecticut Ave, NW

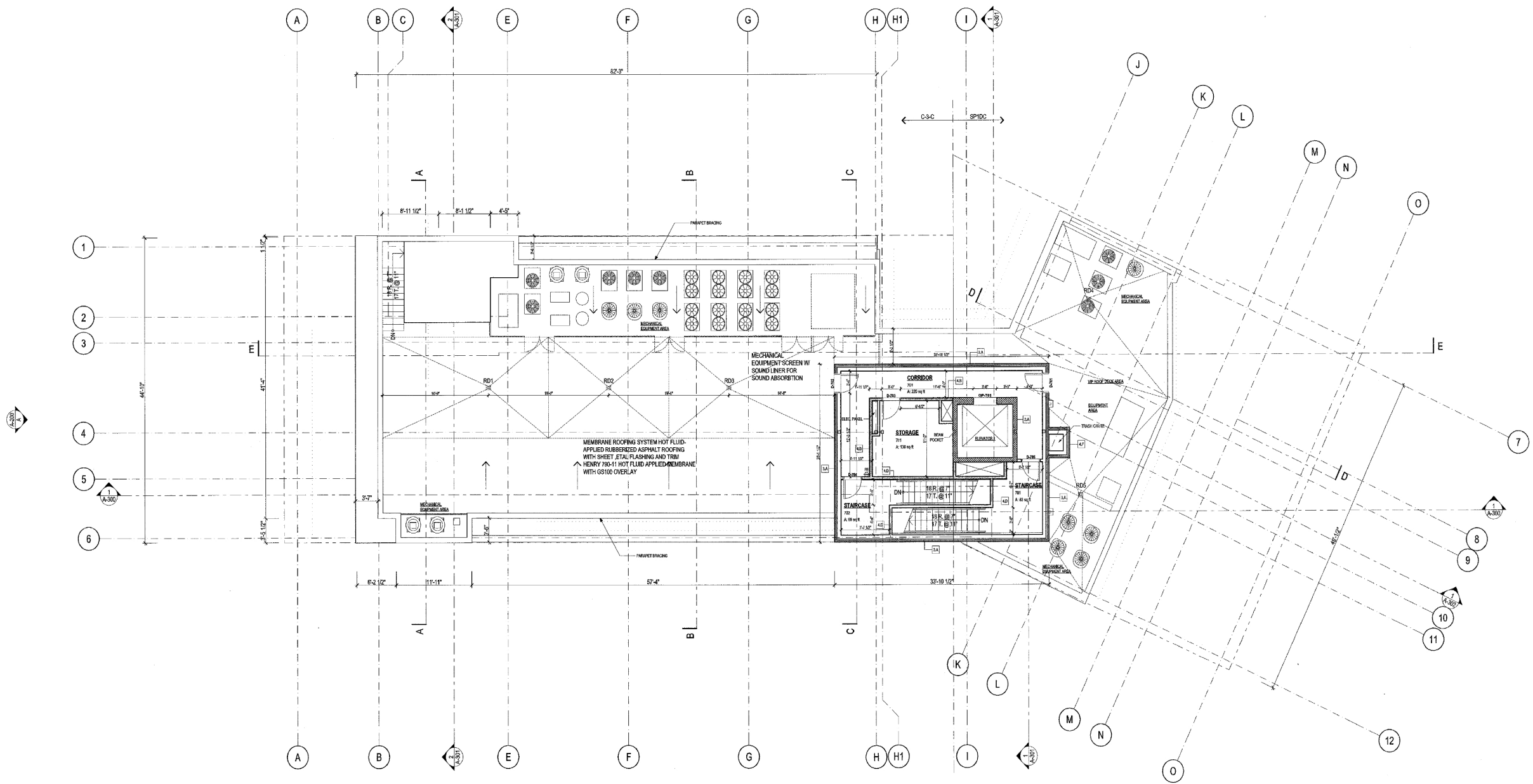
FAR - Allowable 43,106



Level	Existing Permit Area	Proposed Area
Ground	7,799	7,799
Level 2	7,799	7,799
Level 3	7,301	7,301
Level 4	7,252	7,252
Level 5	6,126	6,126
Level 6	5,476	5,476
Level 7	(n/a)	1344
Roof	0	0
Total Hotel	41,753	43,097

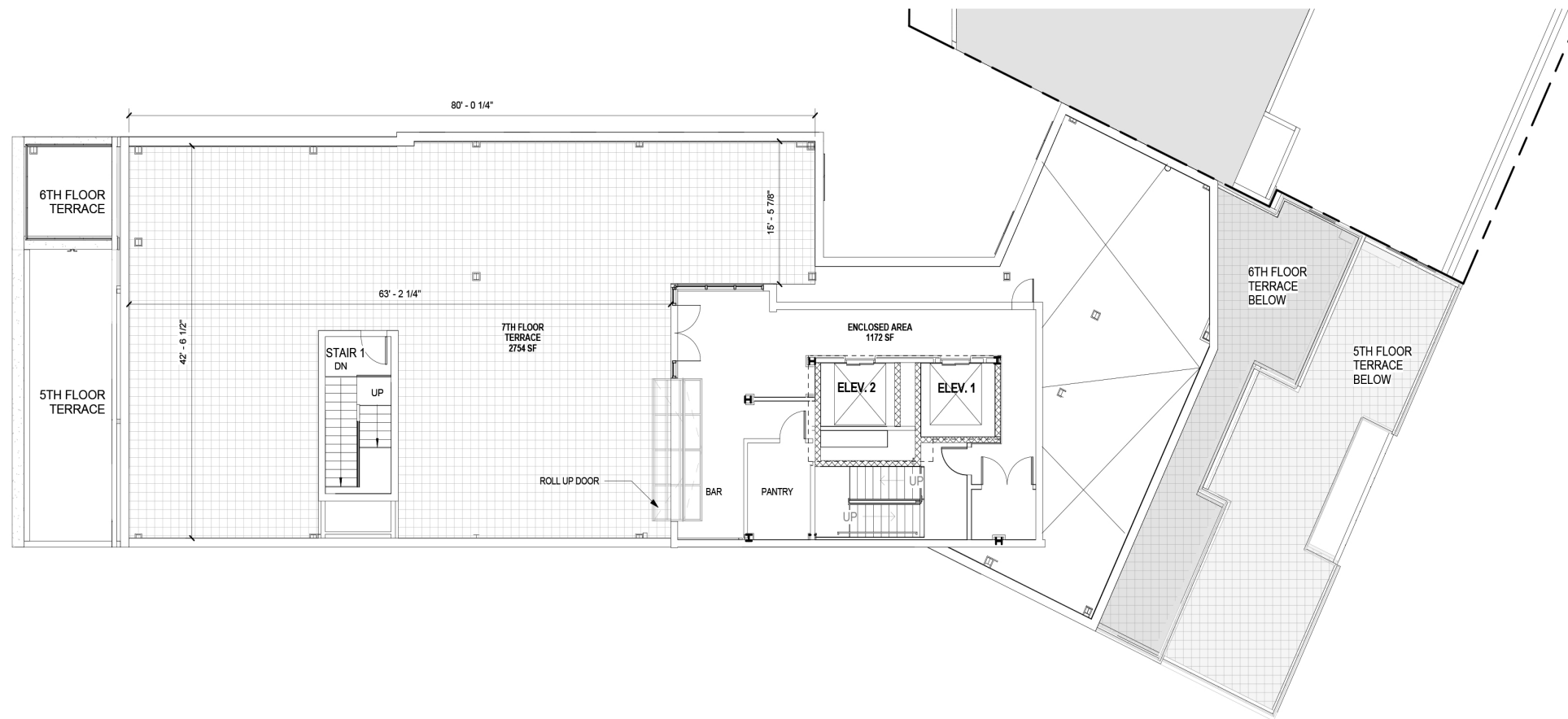
Zoning Information

	Allowed	Previously Approved	Proposed
Height			
To Roof Slab	90'-0"	70'-9"	81'-1"
Overall height - To Top of Enclosure		84'-3"	86'-0"
Penthouse Height	18'-6"	13'-6"	5'-0"
Lot Occupancy	100%	100%	100%
Yards	Existing Bldg	No Change	No Change



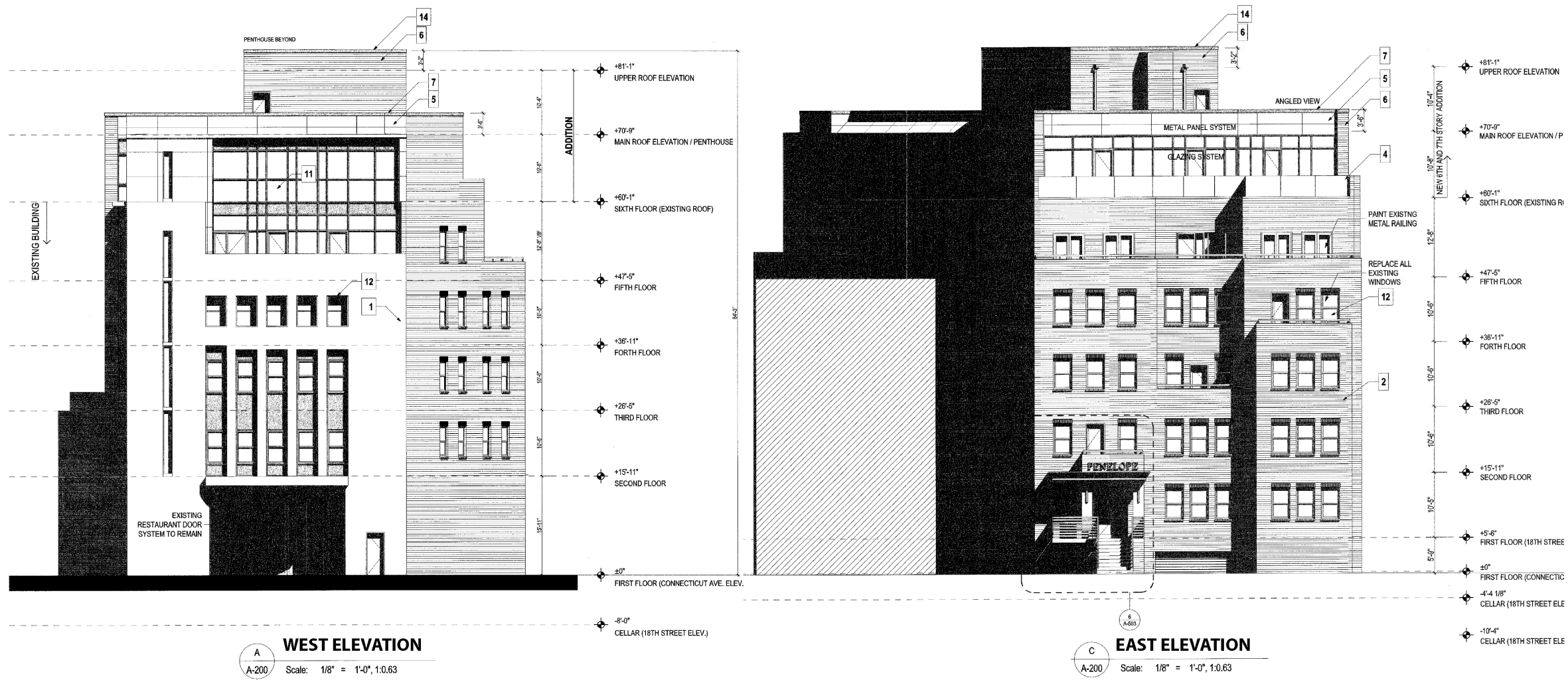
1 ROOF PLAN
 A-107 Scale: 1/8" = 1'-0", 1" = 1'-0"





7TH FLOOR - PROPOSED





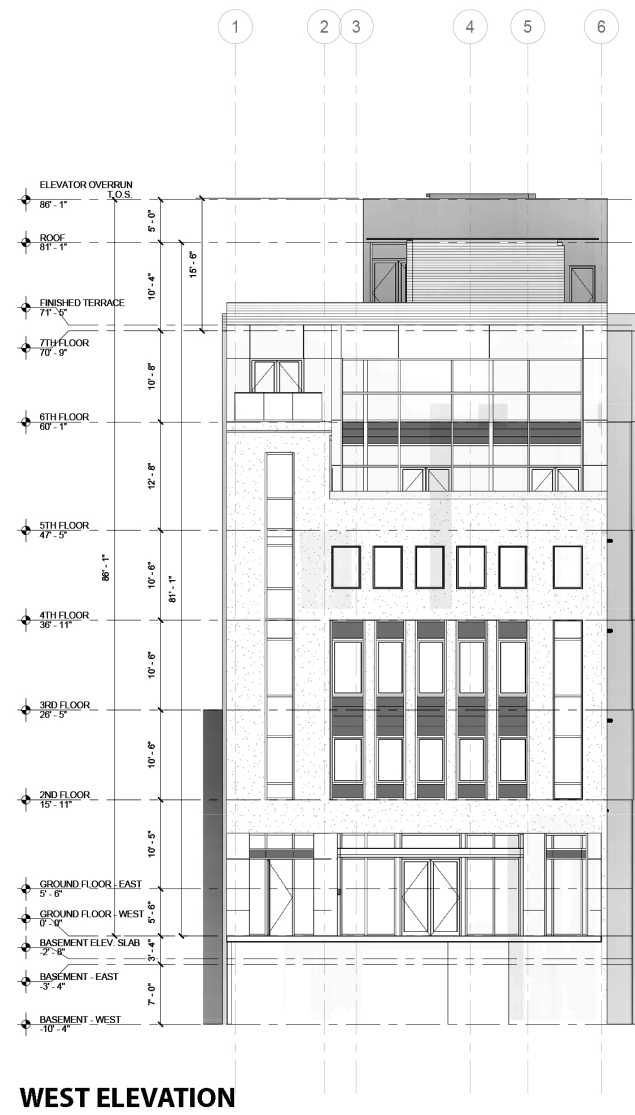
APPROVED ELEVATION

HOTEL
 1337 CT. AVE. NW

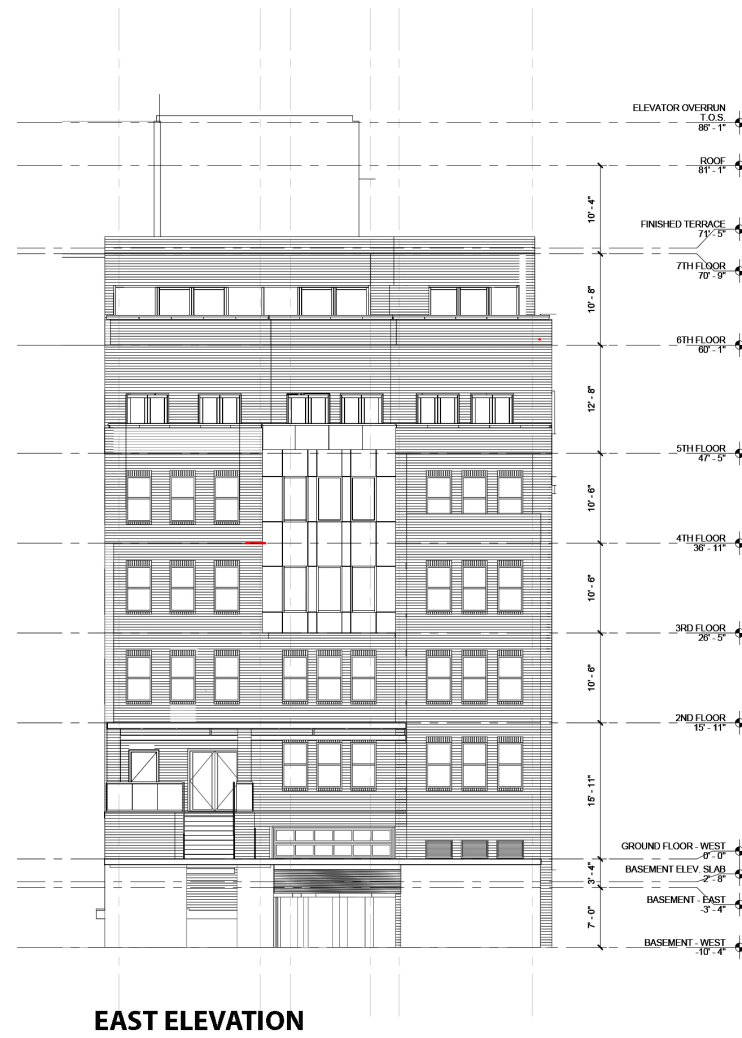
12/05/18
 1825 K STREET, NW SUITE 300 WASHINGTON D.C. 20006
 PG 5



1078.00



WEST ELEVATION



EAST ELEVATION

PROPOSED ELEVATION

HOTEL

1337 CT. AVE. NW

12/05/18

1825 K STREET, NW SUITE 300 WASHINGTON D.C. 20006

PG 6

BBGM